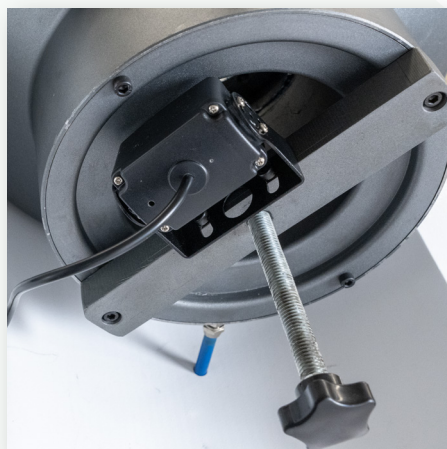




KH32K HOSE CRIMPING MACHINE CAMERA & BACK STOP

Installation
Instruction
Manual



REARVIEW CAMERA AND MONITOR

(Part No. KMCAM)

The rearview camera includes camera and connectors, monitor, monitor mount, and hardware. Backstop Assembly is also required for mounting camera and should be ordered with the camera. Install Crimper Backstop Assembly first by following the installation instructions on page 4. Next install Monitor and Camera.



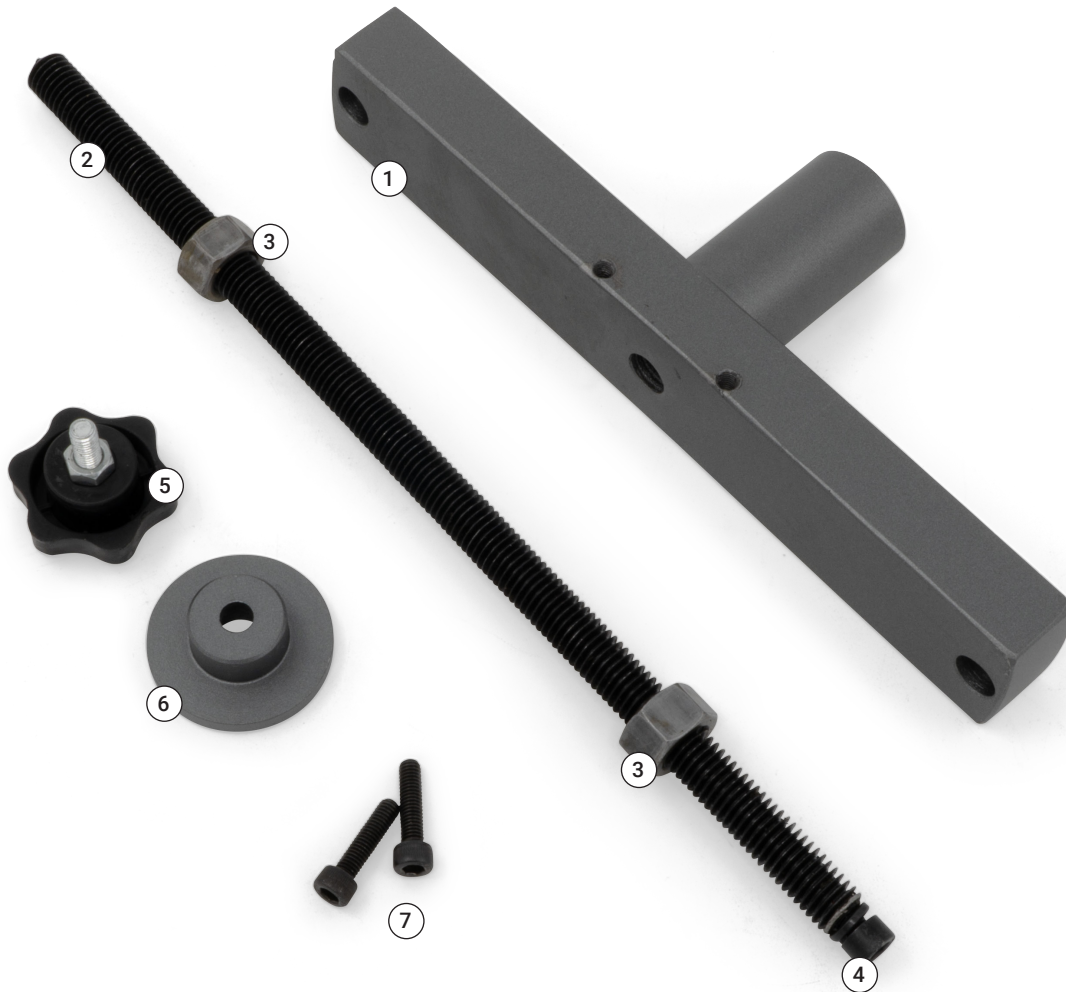
IN THE BOX - CAMERA AND MONITOR

- 1. Monitor**
- 2. Monitor base**
- 3. Monitor base two-side adhesive pad:** Can use with or without 4 mounting screws
- 4. Monitor mounting screws (4 - M4x10):** Can use with or without two-sided base sticker
- 5. Wire harness:** Includes power (red wire) and two camera connections (black plugs)
- 6. Zip ties (4)**
- 7. Zip tie adhesive mounts (4)**
- 8. Camera**
- 9. Camera mounting screws (2 - M5x10)**

BACKSTOP ASSEMBLY

(Part No. KMBS)

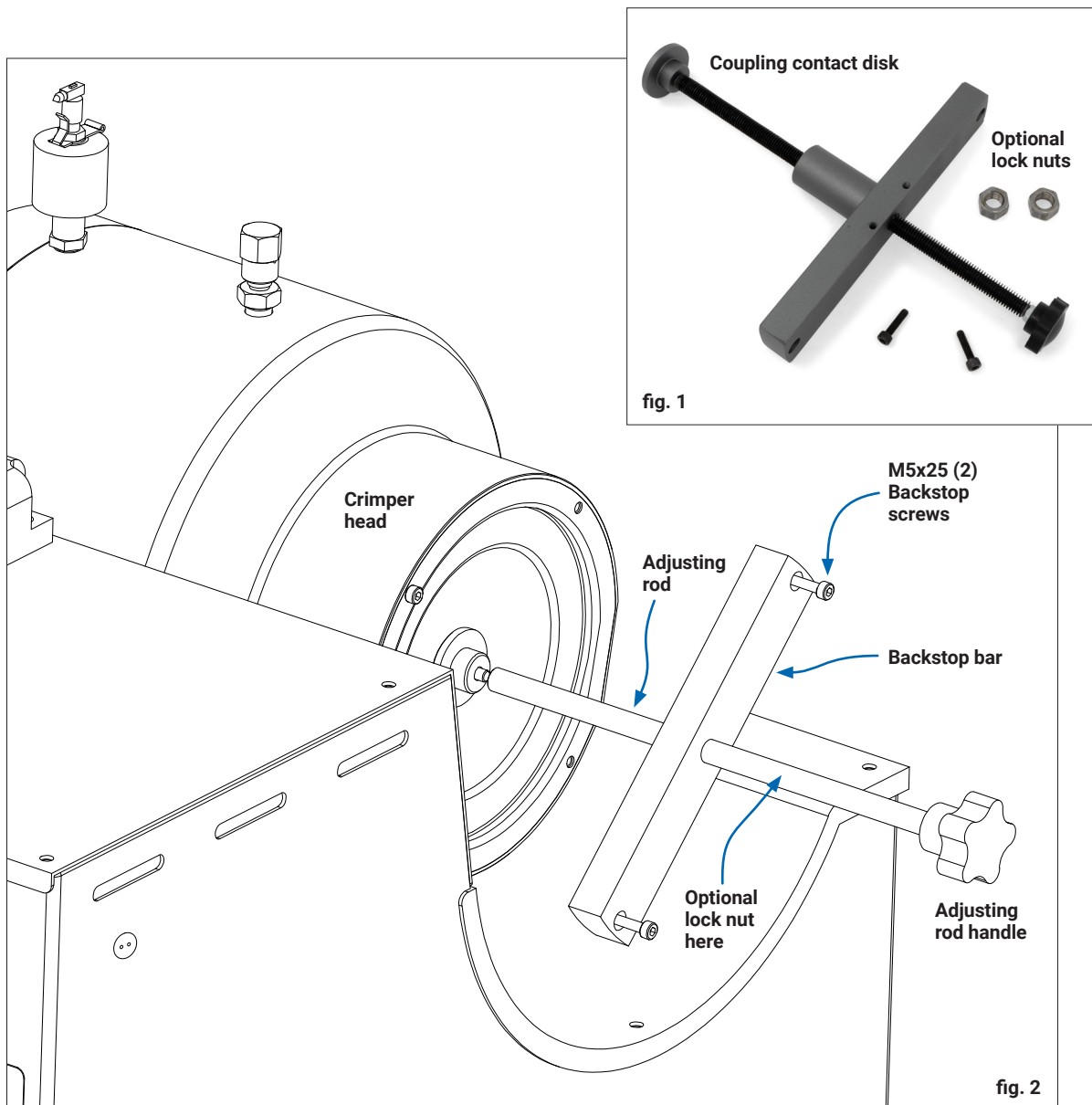
The optional backstop assembly screws into place and includes a threaded adjustment bar and coupling contact disk for fast, accurate crimping when making multiple hose assemblies.



IN THE BOX - BACKSTOP

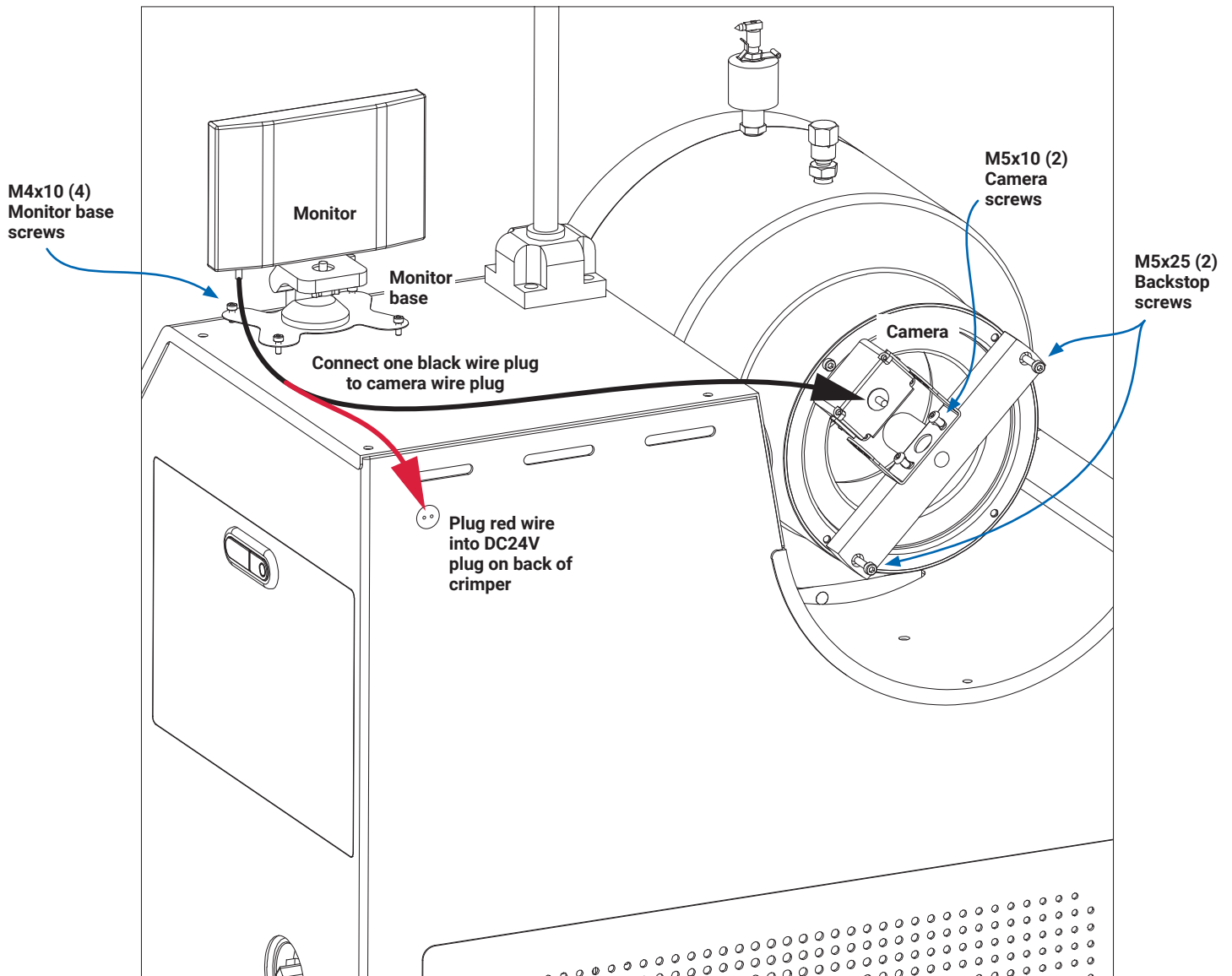
1. Backstop bar
2. Adjusting rod
3. Adjusting rod lock nuts: Optional, can be used outside of crimper head to lock adjusting rod
4. Coupling contact disk attachment screw (1 - M6x15)
5. Adjusting rod handle
6. Coupling contact disk
7. Backstop bar mounting screws (2 - M5x25)

BACKSTOP ASSEMBLY INSTALLATION



1. Be sure power is off and crimper is unplugged before installation.
2. Screw adjusting rod handle onto adjusting rod: use loctite to prevent handle from loosening.
3. Optional: Screw a locknut onto adjusting rod near handle so that it will remain outside crimper.
4. Screw adjusting rod through backstop bar as shown in fig. 1.
5. Screw coupling contact disk onto end of adjusting rod opposite the handle: use the M6x15 screw found in the end of the adjusting rod as shown in fig 1. Use loctite to prevent screw from loosening.
6. Screw backstop bar to the back of the crimper head using two M5x25 mounting screws. Torque screws to 5Nm.

MONITOR AND CAMERA INSTALLATION



1. Be sure power is off and crimper is unplugged before installation.
2. Attach monitor base using two-sided adhesive pad and/or four M4x10 mounting screws.
3. Install Backstop: follow instructions on page 4.
4. Mount camera to backstop bar as shown using two M5x10 screws.
5. Install monitor on base: remove monitor from protective case to reveal mounting hole on bottom.
6. Connect red wire plug to the DC24V plug: it is not necessary to connect the green ground.
7. Connect one of the black plugs to the camera plug.
8. Use zip-tie adhesive mounts and zip ties to neatly route wires.
9. Power on machine and check to see that monitor and camera have power.
10. Angle camera as needed to see inside crimp head.



Thank you for your purchase! If you have any feedback or questions please contact us:

Kurt Hydraulics // A Division Of Kurt Manufacturing

302 Jeffers Avenue, Lyman, NE 69352
Phone 308-787-0127 | Toll Free: 866-257-7995
Fax 308-787-1281

kurthydraulics.com | hydraulicsales@kurt.com

Manual Version:
12.31.2024